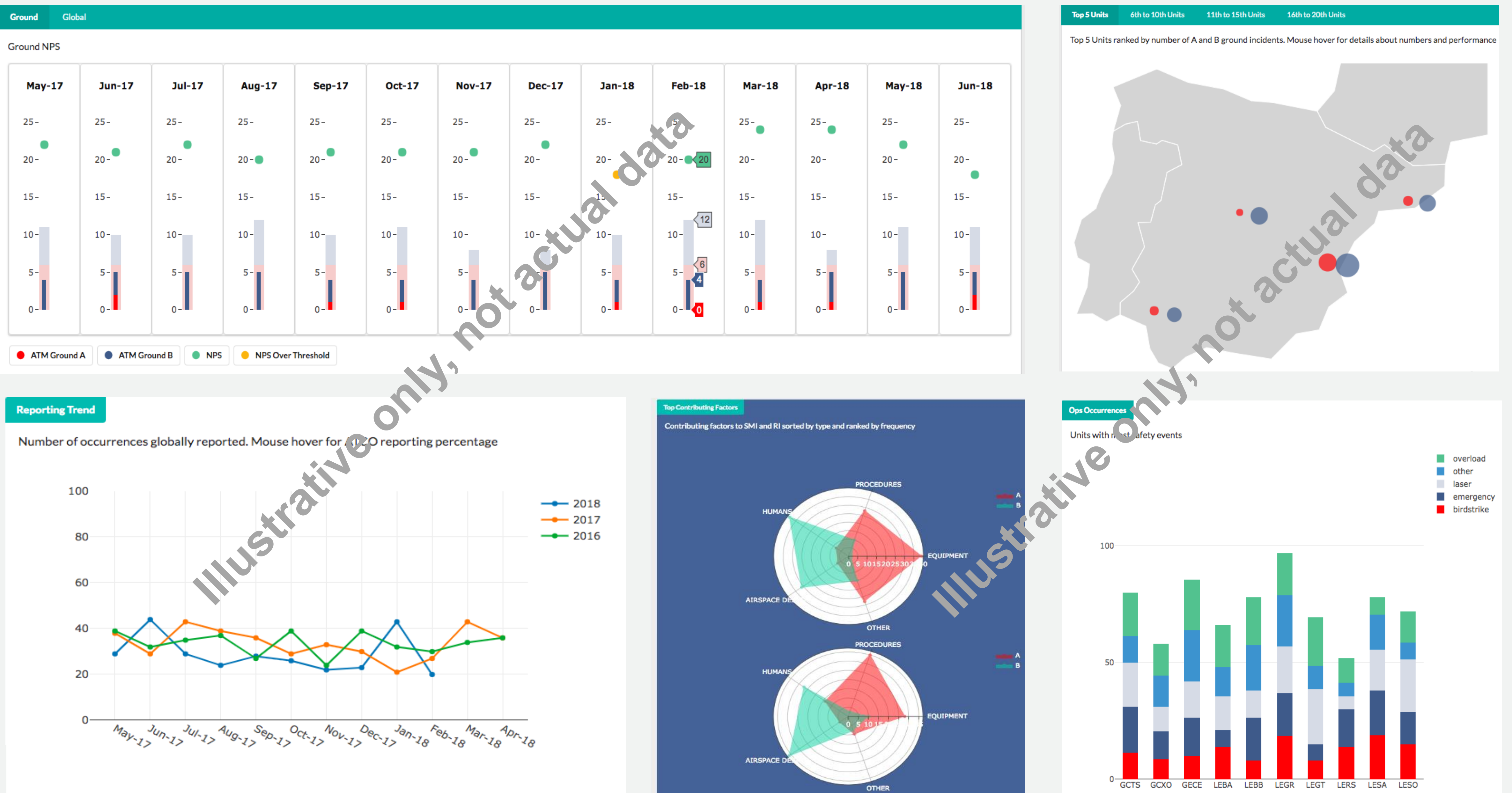




A Prototype Interactive Safety Dashboard for ENAIRE

(Data shown are *illustrative only*, and *not actual data*)



In the context of the Future Sky Safety P5 exploitation action on Safety Intelligence, we further developed the work started in 2016 on Safety Dashboards (SDB) for ANSPs executives.

In January 2018, EUROCONTROL launched a series of workshops to present the first static prototype of SDB designed with the help of a small user group of 6 ANSPs, and continue the discussion about safety data visualisation.

ENAIRE, the largest Spanish ANSP, volunteered for partnering up with EUROCONTROL and Deep Blue to develop a full-scale interactive SDB.

We kicked off the work in May 2018, meeting ENAIRE safety staff to understand their current SDB, collect their needs and produce a first sketch of the future SDB.

Deep Blue worked on the software development of a first prototype and shared it with EUROCONTROL and ENAIRE in August 2018, to receive feedback and steer the functional and visual design accordingly. In addition to the front-end visualisation aspects, the remaining work will take care of the back-end by automating data feed into the dashboard, thereby streamlining the connection to the multiple data sources in use. The final goal is the release of a fully functional SDB by the end of December 2018.